

Juniper Court, College Hill Road, Harrow Weald, HA3

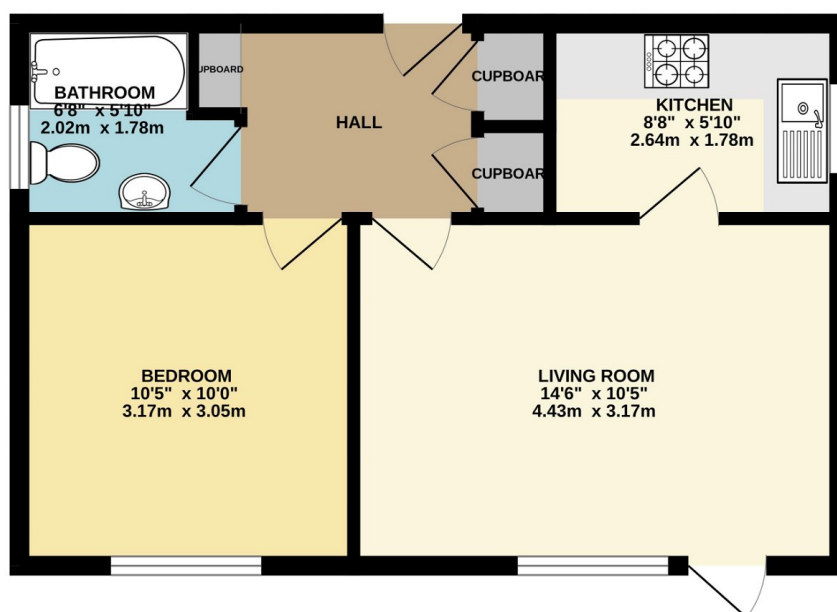
£275,000

1 1 1



- 7'1 X 5'10 ENTRANCE HALLWAY
- 14'6 X 10'4 RECEPTION ROOM
- FITTED KITCHEN
- DOUBLE BEDROOM
- BATHROOM/W.C.
- UPVC DOUBLE GLAZED
- GAS CENTRAL HEATING
- ENTRY PHONE SYSTEM
- COMMUNAL REAR GARDEN
- OFF-STREET PARKING

GROUND FLOOR
399 sq.ft. (37.0 sq.m.) approx.



TOTAL FLOOR AREA: 399 sq.ft. (37.0 sq.m.) approx.
Whilst every attempt has been made to ensure the accuracy of the floorplan contained here, measurements of doors, windows, rooms and any other items are approximate and no responsibility is taken for any error, omission or mis-statement. This plan is for illustrative purposes only and should be used as such by any prospective purchaser. The services, systems and appliances shown have not been tested and no guarantee as to their operability or efficiency can be given.
Made with Metropix C2023

A purpose built one bedroom ground floor flat with direct access to the communal rear gardens, off street parking and offered as chain free. Located close to local shops, bus routes, The High Road with Waitrose and other additional shops. EPC Rating: D.